

A photograph of a man from behind, wearing a white t-shirt with the text 'ALL I NEED IS U' on the back. A small dog is sitting on his shoulders, looking over his head. The background shows a window with horizontal blinds and a wooden door frame.

**Odisee  
Postgraduate  
programs in  
companion animal  
behaviour and  
welfare**

ACADEMIC YEAR 2021-2022 & 2022-2023

[www.odisee.be/clinicalanimalbehaviour](http://www.odisee.be/clinicalanimalbehaviour)

[www.odisee.be/animalbehaviourtechnician](http://www.odisee.be/animalbehaviourtechnician)

[www.odisee.be/introductionscientificstudy](http://www.odisee.be/introductionscientificstudy)



KNOWLEDGE IN PET COACHING

**Odisee**  
UNIVERSITY OF APPLIED SCIENCES

## Content

Improving companion animal behaviour and welfare? Yes we will!.....	3
What are your professional possibilities? .....	4
How we help you to achieve your goals .....	5
Dog, cat and an optional species.....	6
We go worldwide! .....	6
Another option: follow individual modules.....	7
Which course suits you best?.....	8
Postgraduate course in Clinical animal behaviour (CAB) – Clinical animal behaviourist .....	8
Your professional dream comes true?.....	8
Entry requirement .....	9
What will you learn?.....	9
Course content Clinical animal behaviour .....	9
Online workshops .....	10
How do we assess your knowledge? .....	11
Feedback on the course from our CAB-alumni.....	11
Postgraduate course in Animal behaviour (ABT) – Animal behaviour technician.....	12
Your professional dream comes true? .....	12
Entry requirement .....	13
What will you learn?.....	13
Course content Animal behaviour technician .....	13
Online workshops .....	15
How do we assess your acquired knowledge? .....	15
Feedback on the course from our ABT-alumni.....	15
What is the difference between Clinical Animal Behaviourist (CAB) and Animal Behaviour Technician (ABT)? .....	16
Practical information .....	17
What is the tuition fee?.....	17
Postgraduate course in Clinical Animal Behaviour (PG CAB).....	17
Postgraduate course Animal Behaviour Technician (PG ABT) .....	17
Individual modules .....	17
Optional module .....	17
How does the online course work? .....	18

I already have studied in this field of study: can I ask for exemptions? .....	18
How do I apply for an exemption? .....	19
Who are my contact persons in this course? .....	19
Who are my lecturers in this course? .....	20
Testimonials .....	20

## Improving companion animal behaviour and welfare? Yes we will!

Many pet owners and their animals suffer although owners describe their companion animals as family members. Unfortunately, many do not succeed to provide proper care for their cat, dog, rabbit or horse.

### The cause?

The owners are misinformed. There are too many unqualified 'professionals' working in the field and too few institutions to obtain a recognized qualification.

### The result?

Pets develop health and behaviour problems, they experience a poor quality of life and the human-animal bond breaks down. In some cases the dog, cat, rabbit or horse will be abandoned or euthanized.

### Let's prevent this!

The foundations for a lifelong happy human animal bond are created when proper care is given. This includes providing the biological, behavioural and emotional needs of an animal.

At Odissee we want to improve the welfare of companion animals. We train you to become a professional in the animal care sector. Odissee has been providing these accredited courses based on the latest scientific knowledge for 15 years.



We offer postgraduate courses for the role of Clinical Animal Behaviourist and Animal Behaviour Technician. Let's have a look what could be the right course for you.

*1 Foto door Trinity Kubassek via Pexels*

If your answer to one or more of the questions below is YES, you meet our student profile:

- You want to obtain an academically recognized qualification.
- You are interested in companion animal behaviour, welfare and training for the prevention of or dealing with problem behaviours.

- You already work with companion animals and want to broaden or top up your skills.
- You are interested in a career in the companion animal businesses, including working as a clinical animal behaviourist, working in the companion animal care sector such as veterinary clinics, shelters and catteries, dog schools, or companion animal related enterprises and organizations and want to obtain an academically recognized qualification? You might want to participate in the whole course to obtain a thorough theoretical understanding of the field based on the latest scientific knowledge and to develop the necessary practical training and communicative skills.
- You might want to follow a specific module only to top up your knowledge and want to obtain an academically recognized qualification?
- You have a good knowledge of the English language, in understanding as well as in writing.
- You have a bachelor degree.

## What are your professional possibilities?

Our best ambassadors are our alumni and current students. Let's have a look at what they say and do as a job.

They provide behavioural services by running their own behaviour clinic or training classes. Some are responsible for the behavioural program and behavioural clinic in veterinary clinics and shelters.

- Jos Jongen (The Netherlands)
- Katrien De Clercq (Belgium)
- Ingrid Van Overbeke (Canada)
- Kristiina Torp (Finland)
- Teresa Umbelino (Portugal)
- Benjamin Jacobs – [de Katadviseur](#) (Belgium)
- Josine Warnier – [de Nijnerij](#) (The Netherlands)
- Jozefien Dirckx – [Kallie Dierengedragstherapie](#) (Belgium)
- Jessica Postelmans – [Monsieur Gustave](#) (Belgium)

They educate pet owners. Ilse works as a veterinary behaviourist and wrote a book and gives seminars and workshops to inform owners how to care for their pets to have a happy life. Liselot works for an organization to help animals in need.

- Ilse Rediers – [Boek Een vlekkeloos hondenleven](#) (Belgium)
- Liselot Boersma – [Stichting DierenLot](#) (The Netherlands)

Eva and Joke organise a course on Dog Assisted Interactions at Odisee (<http://www.odisee.be/nl/DAI> )

- Eva Lambrecht (Belgium)
- Joke Decru (Belgium)

## How we help you to achieve your goals

### 1. An academically recognized qualification

Odisee University of applied sciences is an accredited education provider. The quality of our courses is guaranteed through internal accreditation through the academic committee and program committee of Odisee. After successful completion of each module you obtain internationally recognized ECTS credits.

#### *What is ECTS?*

The European Commission explains this as follows:

“ECTS allows credits taken at one higher education institution to be counted towards a qualification studied for at another. ECTS credits represent learning based on defined learning outcomes and their associated workload. ECTS enhances the flexibility of study programmes for students.”

[Read more on their website.](#)

Odisee offers two courses or qualifications:

- The Postgraduate course in Clinical Animal Behaviour. Leading to a role of Clinical Animal Behaviourist (PG CAB). 60 ECTS<sup>1</sup> and a duration of 2 years.
- The Postgraduate course in Animal Behaviour. Leading to a role of Animal Behaviour Technician (PG ABT). 40 ECTS and a duration of 2 years.

### 2. Online course + virtual workshops

We combine online learning with virtual workshops with your peers, and in small groups of 4 to 6 students. We focus on companion animals being dogs, cats, small prey mammals (with the emphasis on rabbits) and horses. At the start of the academic year you receive a timetable with start dates of each module, when the exams are planned and when you have an assignment deadline.

We choose for a multidisciplinary approach, drawing on scientific knowledge and techniques from for example ethology, biology, psychology, veterinary science, anthrozoology, animal cognition, law and ethics and welfare science.

Online lectures are given by international experts in the field. They introduce theoretical concepts, provide information that is not easily available through other sources or discuss and highlight specific topics. Each online module is introduced by a course syllabus which guides you through the module, explains what the learning aims are, how to start with the module and what is expected of you. The course syllabus also informs you on the assessment (multiple choice exam, assignment) and how to study this. It is your guideline through the module.

---

<sup>1</sup> ECTS = ECTS credits or study points. One ECTS credit is equal to a workload of 25 study hours. **One ECTS is equal to 2.5 UK CAT points at level 7.**

The lecturers upload pre-recorded video lectures. You can view these whenever it suits you best. Each module also provides a reference list with important literature on the module's topic.

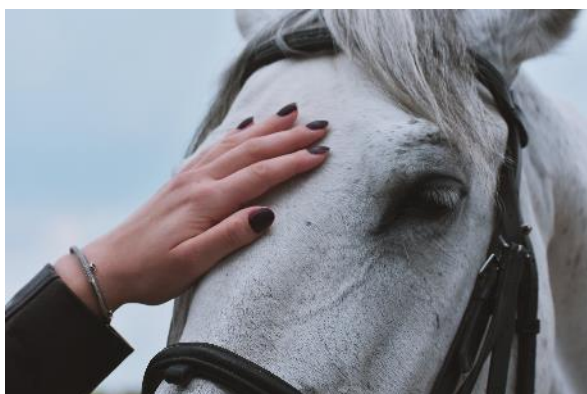
Your lecturers are academics that are at the forefront of the field. They facilitate and guide your learning towards achieving the learning outcomes of the courses. You can always contact them or the module coordinator should you have any questions on their lecture.

Get to know them on our website/Facebook.

During the virtual workshops you develop under the supervision of tutors your practical skills in animal handling, training, communication and conducting behaviour consultations.

To achieve this goal, you participate in online workshops consisting out of sessions with the whole class, sessions in small groups, practical assignments and individual sessions with your tutor.

## Dog, cat and an optional species



2 Photo by Anna Shvets via Pexels

You choose an additional species that you will study in the course, besides dogs and cats. You can choose between small mammals or horses. In the modules you will receive lectures and literature references on your chosen species. In some assignments you will be able to develop a treatment for your optional species.

## We go worldwide!



3 Photo by Dziana Hasanbekava via Pexels

In 2021-2022 we open our courses to students from all over the world!

Until now we worked with real life workshops in The Netherlands. Due to entry restrictions in the European Economic Area we were thus not able to allow non-European students in our course.

In 2020-2021 we reinvented our workshops into an online version due to the Covid19 pandemic. This worked very well and we decided to continue this online approach. So, wherever you live on our planet: if you have a computer and a good internet

connection, you can join us!

### **Another option: follow individual modules**

Interested in the program but not ready to take the whole course? Maybe you want to learn more about just one aspect of animal behaviour and welfare?

You can choose to register for individual modules of one of the offered courses, without subscribing for the whole course. You can only register for a complete module (not partial). Some modules require the knowledge of the previous module. If you wish to take only some modules, please contact us:

[Heidi.poelman@odisee.be](mailto:Heidi.poelman@odisee.be)

## Which course suits you best?

### Postgraduate course in Clinical animal behaviour (CAB) – Clinical animal behaviourist



4 Photo by Aloïs Moubax via Pexels

#### Your professional dream comes true?

You are (or will be) working in the animal care sector, with responsibility for planning and managing humane approaches to prevent and address behaviour and welfare problems including behavioural disorders in companion animals. You want to meet the academic requirements of the profession of clinical animal behaviour counselor. To have an extensive understanding of clinical animal behaviour and the related scientific/clinical literature and to achieve specialist knowledge based on the latest scientific insights in the field of companion animal behaviour and counseling. You wish to be qualified to develop a behavioural diagnosis and implement an effective and feasible behaviour modification program for dogs and cats (obligatory) and horses or small prey mammals (Optional. You should choose one option). You might want to develop an academic career, get involved in scientific research or provide consultancy services.

## Entry requirement

You have (at least) a bachelor degree (level 6) with a good command of the English language. We recommend a master degree for this course.

### Who?

Do you have a master's degree? Do you want to give companion animals a better life by running your own behavioural referral practice? Or would you love to teach about animal behaviour and welfare?

Academic writing in English does not scare you?

This is the perfect course for you!

## What will you learn?

You will obtain a lot of theoretical knowledge, as well as practical skills.

At the end of the course this will be your profile:

- You have an in-depth understanding of normal and pathological behaviour of companion animals.
- You understand their behavioural and welfare needs.
- You have the expertise to assess the behaviour and welfare of companion animals.
- You have the theoretical knowledge to diagnose behaviour problems and to compose behaviour modification programs including the use of psychopharmacological interventions in cooperation with a veterinarian if you are not a qualified vet yourself.
- You have the practical handling and training skills to implement behaviour modification programs in practice.
- You have professional skills in client counseling and effective communication.

With these skills you will be able to work as a qualified Clinical animal behaviourist!

## Course content Clinical animal behaviour

Modules	ECTS credits per module
M1 Ethology of companion animals	8
M2 Learning theory and animal training	6
M3 The welfare of companion animals	4
M4 Anatomy and physiology and the interaction between health and behaviour	10
M5 Animal law and ethics	4
M6 Clinical procedures: Theoretical background	7
M7 Clinical procedures: workshops	5
M8 Research methods and practice	16
<b>TOTAL:</b>	<b>60</b>
<b>Optional:</b> Introduction to the scientific study of CABW	3

In the first year you work on the modules 1-2-3-4 (28 ECTS). In the second year you continue with the modules 5-6-7-8 (32 ECTS).

You can read more on the content of each module in the ECTS-document on our website:  
[www.odisee.be/clinicalanimalbehaviour](http://www.odisee.be/clinicalanimalbehaviour)

In CAB you learn how to develop a behavioural diagnosis of pathological behaviour. You will be able to treat pathological behaviour through the use of psychopharmacology yourself if you are a veterinarian, or in cooperation with a veterinarian if you are not a veterinarian yourself.

### Language

In the CAB-course all lectures, assignments, exams and workshop days are in English. A good knowledge of English is important!

### **Do you have limited experience in scientific writing or do you feel unsure about this?**

In order to be well prepared for the CAB course assignments, we strongly advise you to participate in the optional module on 'Introduction to the scientific study of Companion Animal Behaviour and Welfare' (3 ECTS) before the start of the CAB course. In this module you learn how to search for scientific literature, how to interpret scientific papers and how to write assignments correctly using scientific based knowledge and a scientific writing style. It offers you the necessary knowledge to write scientifically based assignments for the postgraduate course.

This module is offered online and costs €390. You can register for this module at any time.

Find out more about this module: [www.odisee.be/introductionscientificstudy](http://www.odisee.be/introductionscientificstudy)

## **Online workshops**

In the online workshops we will help and encourage you to develop your practical skills in animal training and behaviour counselling. To achieve this goal, you participate in online workshops consisting out of sessions with the whole class, sessions in small groups, practical assignments and individual sessions with your tutor.

Under the supervision of your tutors you practice and develop your skills in animal handling and training. You conduct cases studies to practice your skills in history taking, the development of a behavioural diagnosis and the composition and communication of effective and feasible behaviour modification programs. Five virtual workshop days are scheduled during the first year and five during the second year of the course.

## What do you learn during the workshop days?

We work on the following items:

Interpreting animal behaviour using real life videos on animal behaviour

Animal handling through analysing videos and feedback on your own handling skills.

Animal training through analysing videos and feedback on your own training skill while teaching an animal specific behaviours.

Composing training programs.

Giving animal training instructions.

## How do we assess your knowledge?

To assess whether you meet the academic requirements of the course you submit written assignments, practical assignments and participate in multiple choice exams. The assessment method per module is specified in the ECTS files on the course website. This is the link.

After successful completion of the course you will receive a Postgraduate diploma in Clinical Animal Behaviour of Odisee University of Applied Sciences. This certificate is an academically recognized qualification.

## Feedback on the course from our CAB-alumni

*This course is a solid, strong base, which will finally connect bits and pieces from different roles in my life. Even more important it contributes to better welfare of my own doggy pack.*

*I am very impressed with the kindness and personal approach in registration and the transition to the second year. My emails are always answered quickly, extensively and friendly.*

*This course gave me a solid scientific base from which to work with my clients and their animals. In addition to using more general advice that will help any owner or animal I am now able to make individual treatment plans adapted to the owners' resources and the needs of the animal based on scientific research.*

*The assignments were very cleverly thought out. I loved it when each time a new module started I would read the assignment and not have a clue what was required as an answer. Then I started reading the given material in alphabetical order or as it was listed and bit by bit the pieces for the assignment started to fall in place.*

## Postgraduate course in Animal behaviour (ABT) – Animal behaviour technician



*"All creatures are  
deserving a life free from  
fear and pain."*

*Maura Cummings*

5 Photo by Alexandr Podvalny via Pexels

### Your professional dream comes true?

You are (or will be) working in the animal care sector, with responsibility for planning and managing the prevention of welfare and behaviour problems and humane approaches to the treatment of behaviour problems. This involves understanding, evaluating and addressing inappropriate or problematic behaviours within individual animals, through the development of suitable environments and effective training programs based on scientific evidence and best practice.

You might be working with animals and their owners in a preventive context. For example in a veterinary practice by organizing consultations for puppy or kitten owners or conduct behavioural consultation to prevent or treat problem behaviours related to a lack of or inappropriate learning experiences.

You might be working in an animal shelter and monitor the behaviour and welfare of the animals under your care, develop programs to increase the animals' welfare and adoption chances.

You coach the staff, volunteers, foster parents and adopters. You might run your own behavioural referral clinic, to treat behaviour problems, provide training classes and rehabilitation training.

## Entry requirement

You have (at least) a bachelor degree (level 6) with a good command of the English language.

If you do not have a bachelor degree you can apply for admission through an evaluation of your portfolio and submission of a motivation letter. You find detailed instructions and the deadline for submission on our website by following this link: [www.odisee.be/en/faq-cab-abt](http://www.odisee.be/en/faq-cab-abt)

### *Who?*

Are you an alumnus or last year student from a professional bachelor in animal care? Do you wish to broaden your knowledge on welfare and behaviour of companion animals?

This is the perfect course for you!

Other profiles are, of course, also welcome in this course.

### *No bachelor degree?*

Convince us of your enthusiasm and interest in the field of animal behaviour and welfare! You might have followed other courses or have tons of experience with animals? Write it in your portfolio and your motivation letter. More details on our website on this link.

## What will you learn?

You will obtain a lot of theoretical knowledge, as well as practical skills.

At the end of the course this will be your profile:

- You have an in-depth understanding of the normal behaviour, behavioural needs and welfare of companion animals
- You have the expertise to provide prophylactic behavioural advice to owners/handlers/keepers
- You have the expertise to assess the behaviour and welfare of companion animals
- You have the theoretical knowledge to diagnose behaviour problems and to compose behaviour modification programs for behaviour problems resulting from a lack of or inappropriate learning experiences.  
Not included in the course is the required expertise to diagnose and treat pathological behaviour problems. This means you cannot treat companion animals with abnormal behaviour as a result of emotional disorder or mental health issues.
- You have the practical handling and training skills to implement behaviour modification programs in practice
- You have professional skills in client counseling and effective communication

With these skills you will be able to work as a qualified Animal behaviour technician!

## Course content Animal behaviour technician

Modules	ECTS credits per module
M1 Ethology of companion animals	8

M2 Learning theory and animal training	6
M3 The welfare of companion animals	4
M4 Animal law and ethics	4
M5 Anatomy and physiology and the interaction between health and behaviour	10
M6 Clinical procedures: Theoretical background	5
M7 Clinical procedures: Workshops	3
<b>TOTAL:</b>	<b>40</b>
<b>Optional:</b> Introduction to the Scientific study of CABW	3

In the first year you work on the modules 1-2-3-4 (22 ECTS). In the second year you continue with the modules 5-6-7 (18 ECTS).

You can read more on the content of each module in the ECTS-document on our website:  
[www.odisee.be/animalbehaviourtechnician](http://www.odisee.be/animalbehaviourtechnician)

In ABT you focus more on giving advice to prevent behaviour problems. You inform owners on how to treat behavior problems due to insufficient or wrong management and learning experiences. In a professional context you will use management and training exercises for rehabilitation of the animals under your care.

#### Language

In the ABT-course all lectures are in English. However, you can take your multiple choice exam in Dutch. We will try to form Dutch-speaking groups for the workshops and you can submit your assignment in Dutch if the corrector is Dutch-speaking.

#### *Do you have limited experience in scientific writing or do you feel unsure about this?*

In order to be well prepared for the ABT course assignments, we strongly advise you to participate in the optional module on 'Introduction to the scientific study of Companion Animal Behaviour and Welfare' (3 ECTS) before the start of the ABT course. In this module you learn how to search for scientific literature, how to interpret scientific papers and how to write assignments correctly using scientific based knowledge and a scientific writing style. It offers you the necessary knowledge to write scientifically based assignments for the postgraduate course.

This module is offered online and costs €390. You can register for this module at any time.

Find out more about this module: [www.odisee.be/introductionscientificstudy](http://www.odisee.be/introductionscientificstudy)

## Online workshops



6 Photo by Pixabay via Pexels

We will help and encourage you to develop your practical skills in animal training and communication. To achieve this goal you participate in online workshops consisting out of sessions with the whole class, sessions in small groups, practical assignments and individual sessions with your tutor.

Under the supervision of your tutors you practice and develop your skills in animal handling and training. You conduct cases studies to practice your skills in animal behaviour training and the composition and communication of effective and feasible behaviour programs. Five virtual workshop days are scheduled during the first year and five during the second year of the course.

### *What do you learn during the workshop days?*

We work on the following items:

Interpreting animal behaviour using real life videos on animal behaviour

Animal handling through analysing videos and feedback on your own handling skills.

Animal training through analysing videos and feedback on your own training skill while teaching an animal specific behaviours.

Composing training programs.

Giving animal training instructions.

## How do we assess your acquired knowledge?

To assess whether you meet the academic requirements of the course you submit written assignments (in English or Dutch), practical assignments (in English or Dutch) and participate in multiple choice exams (in English or Dutch). The assessment method per module is specified in the ECTS files on the course website. This is the link.

After successful completion of the course you will receive a Postgraduate diploma in Animal Behaviour of Odisee University of Applied Sciences. This certificate is an academically recognized qualification.

## Feedback on the course from our ABT-alumni

*I hope to use this course to use in my job. Helping out more foster families whose dogs have behavioural problems. Working more on an individual basis with them.*

*The knowledge of the lecturers and the quality of the articles ensure that this course is important for anyone who wants to work professionally with animals. However, I advise everyone to make enough time for this, especially in combination with a job or a family.*

*Thanks to the training, I have a solid scientific framework to support my animal supervision.*

## What is the difference between Clinical Animal Behaviourist (CAB) and Animal Behaviour Technician (ABT)?

Differences at a glance:

1. Level of difficulty: master level vs bachelor level
2. Study load: 60 ECTS vs 40 ECTS
3. Difference in assessments: more formative and summative assignments in CAB
4. Language demands: completely in English (CAB) or possibility to do (the assessment of) some modules in Dutch
5. Difference in learning on behaviour problems: pathological vs insufficient/wrong learning experiences

Read more details on the differences between ABT and CAB:

<u>Animal behaviour technician</u>	<u>Clinical animal behaviour</u>
<ul style="list-style-type: none"><li>• Bachelor level</li><li>• 40 ECTS – 10 workshop days</li><li>• No formative assessments, less summative assessments, more multi-ple choice exams.</li><li>• Language: all learning material is in English but you are able to submit assignments in Dutch when the corrector is Dutch-speaking. We try to form Dutch-speaking workshop groups. You are able to use a translation and/or explanatory dictionary on the exam.</li><li>• Focus on giving advice to prevent behaviour problems</li><li>• Focus on the treatment of behavior problems due to insufficient or wrong management and learning experiences.</li></ul>	<ul style="list-style-type: none"><li>• High academic course level more in direction of a master level</li><li>• 60 ECTS – 10 workshop days</li><li>• Formative and summative assignments except for one module.</li><li>• Language: all learning material is in English. All assessments (assignments, exams) are in English. You are able to use an explanatory (English) dictionary on the exam.</li><li>• On top of giving advice on behaviour problems you will focus on developing a behavioural diagnosis of pathological behaviour</li><li>• Learning to treat pathological behaviour through the use of psychopharmacology</li></ul>

<ul style="list-style-type: none"> <li>Professional possibilities: you will use management and training exercises for rehabilitation of the animals under your care. ABT's may work in larger organisations or companies like a vet clinic, animal shelter, dog training center or run their own behavioural services.</li> <li>Tuition fee (over two years): €5.200</li> </ul>	<p>yourself if you are a veterinarian, or in cooperation with a veterinarian if you are not a veterinarian yourself</p> <ul style="list-style-type: none"> <li>You will conduct a research project in group under supervision of an expert. <ul style="list-style-type: none"> <li>CAB's may run their own behavioural referral practice or consider an academic career</li> </ul> </li> <li>Tuition fee (over two years): €7.800</li> </ul>
---	--

## Practical information

### What is the tuition fee?

Fees are paid on a year-by-year basis at the start of each year. You will receive an invoice by email.

#### Postgraduate course in Clinical Animal Behaviour (PG CAB)

60 ECTS and a duration of 2 years

CAB year 1: €3.640 (28 ECTS credits)

CAB year 2: €4.160 (32 ECTS credits)

#### Postgraduate course Animal Behaviour Technician (PG ABT)

40 ECTS and a duration of 2 years

ABT year 1: €2.860 (22 ECTS credits)

ABT year 2: €2.340 (18 ECTS credits)

### Individual modules

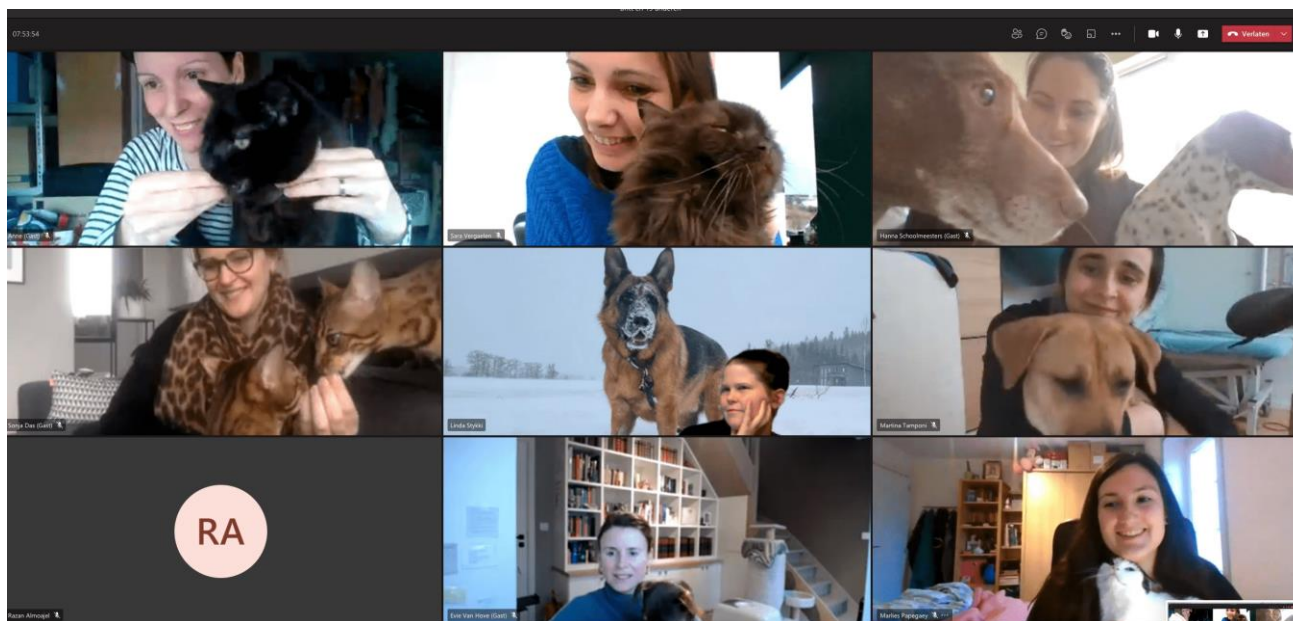
If you register for one or more individual modules, you pay €130 per ECTS.

### Optional module

Introduction to the scientific study of CABW (3 EC): €390

## How does the online course work?

The theoretical concepts of the field will be introduced in e-learning modules. The practical skills in handling, training, behavior modification techniques and communication are taught through online workshops and online feedback sessions on your training videos.



The e-learning modules are introduced on our digital learning platform Toledo.

As a student you will be able to use Office 365 during your study for free. You can contact your fellow students on MS Teams or in a Blackboard virtual classroom on Toledo.

You have access to Science Direct through the Odisee library.

Exams will take place online using an online exam tool (probably Exam.net or XToledo).

## I already have studied in this field of study: can I ask for exemptions?

If you have already studied a course module at the same or higher level as a module of the course you register for, it is possible to request one or more exemptions. Exemption from a module will be granted if you can show successful completion of work as defined by the course's learning outcomes. You find a detailed description of the content and learning outcomes of each module in the ECTS files on the course website. [LINK INVOEGEN](#)

Please note that exemption can only be granted for a complete module and not for separate parts of a module.

Alumni or last year students of the professional bachelor in Animal care (Flanders) unfortunately cannot apply for exemptions based on their professional bachelor. We studied the different programs and exemption is not possible for our courses.

## How do I apply for an exemption?

If you wish to apply for exemption based on *previously acquired qualifications (PAQ)*, please follow the procedure below.

1. Provide a portfolio with the following items:

- A copy of your diploma (if we have not received it yet).
- For each module you apply for exemption:
  - A written proof that you master the content of this module including the grade obtained and the year of completion of the module.
  - A copy of the ECTS-file of the course module you have already followed (in English, Dutch, French or German).
  - A copy of the course syllabus or course handbook outline of the module.

2. Send your portfolio before the 15<sup>th</sup> of September to: [adinda.sannen@odisee.be](mailto:adinda.sannen@odisee.be)

The program coordinator will assess your application. You will receive an email notification of the outcome of your application before the end of September. If you are granted an exemption we will subtract an amount of €130 per study point from your registration fee.

## Who are my contact persons in this course?



**Heidi Poelman, MA**

MA in Translation, University of Ghent, Belgium  
Course coordinator lifelong learning at Odisee

**COURSE COORDINATOR**

[Heidi.poelman@odisee.be](mailto:Heidi.poelman@odisee.be) or +32 (0)9 267 27 09



**Dr. Jolanda Pluimakers, DIP CABC, CCAB**

PhD in Veterinary Behaviour Science, University of Bristol, UK  
Postgraduate degree in Companion Animal Behaviour  
Counselling, University of Southampton, UK

Certified Clinical Animal Behaviourist by ASAB

**COURSE COORDINATOR**

[jolanda@davalon.nl](mailto:jolanda@davalon.nl) or +31 (0)6 52833588



**David Appleby, MSc, CCAB**

Master degree in Companion Animal Behaviour Counselling,  
University of Southampton, UK  
Visiting CCAB to University of Helsinki, Faculty of veterinary  
medicine, behaviour clinic, Small Animal Hospital  
Certified Clinical Animal Behaviourist by ASAB

**CO-COURSE COORDINATOR**

[appleby@abklinikka.com](mailto:appleby@abklinikka.com)



**Adinda Sannen, MSc, PhD**

MSc in Biology, University of Antwerp, Belgium  
PhD in Zoology/ Animal Biology, University of Antwerp,  
Belgium

Researcher and lector at Odisee

**OMBUDS PERSON**

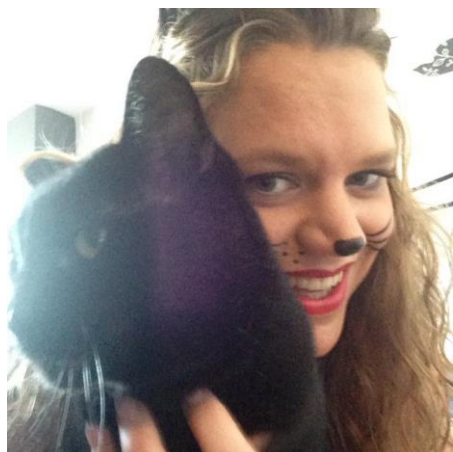
[adinda.sannen@odisee.be](mailto:adinda.sannen@odisee.be)

## Who are my lecturers in this course?

Cf. separate file

## Testimonials

### Margriet Elzinga (CAB 2018-2020)



I learned so much in this course. The workshops were very useful, the theory was clear and good to study on your own and you often received thorough feedback. It wasn't always easy to combine with my job: I was always working for my job or the course. This made it tough sometimes but I'm very happy I completed it and I'm ready to use my new knowledge and skills. I will soon start my own business as a cat behaviourist.

## Jos Jongen (CABW 2017-2019)

### Can you tell us something about your job?

I started my own company in July 2019 ([Braaf voor Honden](#)). I combine this with my work as responsible for dog adoption in the animal shelter in Genk (Belgium). Not only can I help dog owners in my private practice but I can also improve the welfare of the shelter dogs during their time in the shelter, and I can work out a behavior program for their new owners, after adoption.

### How did the course help you in your work today?

In this course I achieved information based on scientific evidence, not on hearsay. Daily new behaviour therapists start their own practice out of a 'passion for dogs'. We can make the difference by really helping dogs and their owners, based on an academically recognized qualification.



### How did you experience the course?

In the beginning I was searching what was expected of me, as it was my first time following an online course. The scientific literature was helpful and interesting; help from Jolanda was only one email away and the practical experiences in the animal shelter in Born were interesting, fun and a great experience. It wasn't easy, but I am very thankful I followed this course!

### Can you tell us something about your dog?

My buddy Laslo came to me from the animal shelter in Genk, where he was found with bite wounds on his face. The first days he did not leave the kennel, did not seek contact, did not eat... Step by step I gained his trust, and he conquered my heart. He shows fear-related aggression. He did not choose to be like that

and enriches my life enormously. However, without the course I would never have understood him and therefore I would not be able to give him what he needs. I learn from him every day and he, hopefully, from me too.

## Annika Mattson (CABW 2015-2017)



At the age of 50, after an exciting career in hospitality, IT and marketing and 15 fulfilling years at home with my 3 children, I decided to go for my dream. My wish was to work with people and animals in a therapeutic context. This course changed my life. I admit that it was challenging at times trying to juggle family and deadlines, but my work/life experience and the valuable support from fellow students made it all possible. Discipline, careful

planning and a good command of English are key concepts for this e-learning course. The notable academic level of the course establishes credibility and understanding when in contact with clients, vets and other professionals. I recently started my [own companion animal behaviour counselling business](#). I enjoy every minute of my new life knowing that I will be able to make a difference in the lives of many pets and their owners.

### **Ingrid Van Overbeke (CABW 2015-2017)**



The online studying was for me excellent. It needs some discipline now and then but the deadlines helped to focus. The course is very thorough, students have to work hard for the assignments but I learned a lot. It was not easy for me to combine the study with our move to Canada but I am glad I finished the course and I started [my business as Pet Counsellor](#) here in Canada. It is still in start-up phase but I get a lot of positive reactions. I only do home visits as I believe that is the only way you can provide a good modification program.